

- NOTES**
- DO NOT SCALE THIS DRAWING.
 - VERIFY ALL DIMENSIONS, DATUMS, AND LEVELS PRIOR TO COMMENCEMENT OF WORK AND REPORT ANY DISCREPANCIES TO THE ARCHITECT IMMEDIATELY.
 - VARIATIONS AND MODIFICATIONS TO WORK SHOWN IN THESE DRAWINGS SHALL NOT BE CARRIED OUT WITHOUT THE WRITTEN PERMISSION OF THE ARCHITECT.
 - ALL DRAWINGS AND SPECIFICATIONS AS INSTRUMENTS OF SERVICE ARE THE PROPERTY OF THE ARCHITECT AND MUST BE RETURNED UPON REQUEST.
 - COPYRIGHT FOR THIS DESIGN REMAINS WITH THE ARCHITECT.

SCHEMATIC
NOT FOR CONSTRUCTION
 PLOTTED DATE: OCT. 15, 2008

NO	DATE	REVISION	BY
G	08.09.11	ADDED MECHANICAL SHAFT AT SOUTHWEST CORNER REVISED SOUTH EXTERIOR WALL	DS
F	08.07.22	WIDENED OPEN STAIR	LP
C	08.04.16	REVISED ELEV. AT USSU FOR CONNECTION TO MARQUEE ADDED STAIR ADJACENT TO NEW MARQUEE ACCESSES OFF OF EXPANSION	DS
B	08.03.26	ALIGNED STRUCTURE AT USSU ELEV. RELOCATED ELEVATOR, REDUCED FLOOR AREA, AND DELETED	LP
A	08.03.25	CORRIDOR AT SOUTH STAIR	LP
NO	DATE	REVISION	BY

CONSULTANT

SEI SAUNDERS EVANS ARCHITECTS INC.
 2230 Lorne Street, Regina
 Saskatchewan, S4P 2M7, Canada
 Ph: (306) 569-2255 F: (306) 359-6846
 E-Mail: regina@saunderevans.com

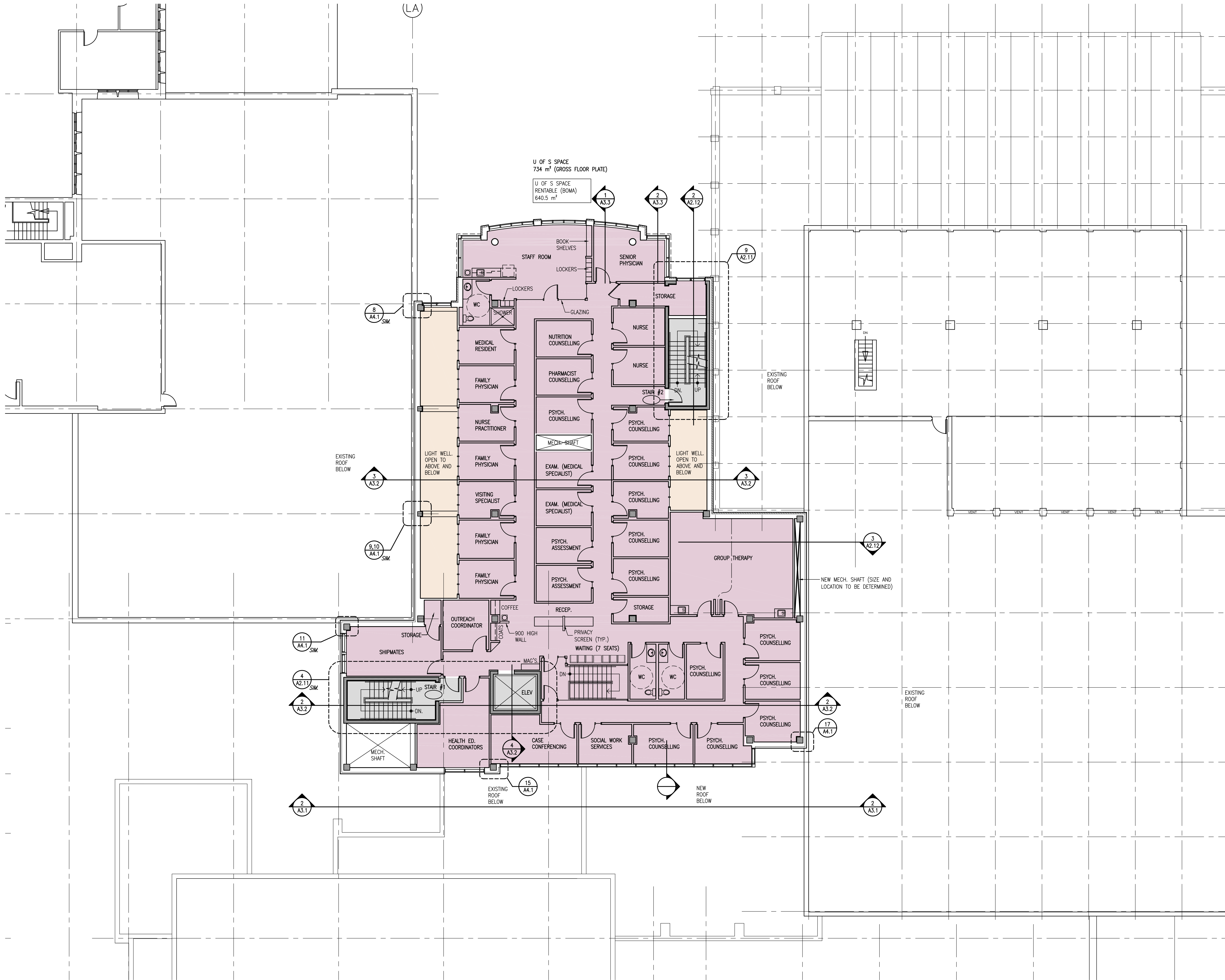
204-2100 Airport Drive, Saskatoon
 Saskatchewan, S7L 6M6, Canada
 Ph: (306) 652-6457 F: (306) 652-6459
 E-Mail: saskatoon@saunderevans.com

PROJECT TITLE
 PLACE RIEL EXPANSION AND RENOVATION

FOR THE UNIVERSITY OF SASKATCHEWAN STUDENT'S UNION AND THE UNIVERSITY OF SASKATCHEWAN

DRAWING TITLE
 FOURTH LEVEL
 OPTION 6G

PROJECT NO.	DRAWING NO.
36/07	SC5G
DATE OCT 15/08	SCALE 1:100
DRAWN DS, LP	CHECKED



FOURTH LEVEL
 1:100 0 1000 2000

THIS SCHEMATIC DRAWING IS INTENDED FOR DISCUSSION PURPOSES AS IT RELATES ONLY TO PLANNING POSSIBILITIES AND EARLY COST ESTIMATES